

# LED Pilot Lamp

KR Series



## Part Number Description



**KR** - **①** **②** **③**

<b>①</b> Size	25 : Ø25	30 : Ø30		
<b>②</b> Supply Voltage	4 : 24VAC/DC	1 : 100 ~ 125VAC/DC	2 : 200 ~ 240VAC	3 : 380 ~ 440VAC
<b>③</b> Color	R : Red	G : Green	Y : Yellow	W : White

## General Specification

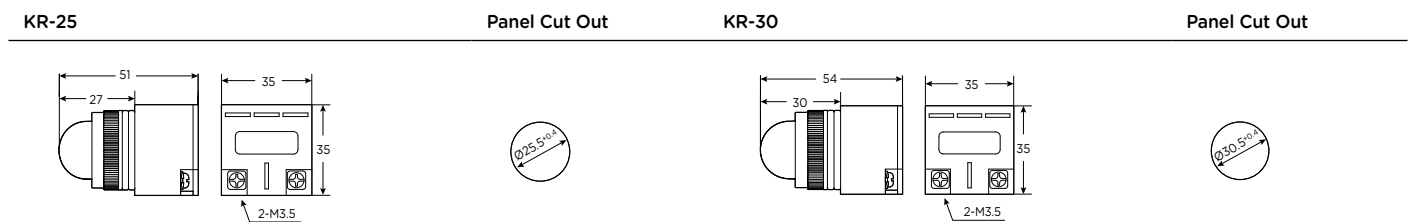
Current Consumption	20mA
Insulation Resistance	100MΩ 500VDC
Life Cycle	50,000 hrs
Lamp	LED
Weight	34g
Ambient Temperature	-35°C ~ +85°C
Tightening Torque	0.8N·m (8.16kgf·cm)

## Product Selection

Size	Supply Voltage	Color	Part Number	Size	Supply Voltage	Color	Part Number
 Ø25	24VAC/DC	Red	KR254R	 Ø30	24VAC/DC	Red	KR304R
		Green	KR254G			Green	KR304G
		Yellow	KR254Y			Yellow	KR304Y
		White	KR254W			White	KR304W
	100/125VAC/DC	Red	KR251R		100/125VAC/DC	Red	KR301R
		Green	KR251G			Green	KR301G
		Yellow	KR251Y			Yellow	KR301Y
		White	KR251W			White	KR301W
	200/240VAC	Red	KR252R		200/240VAC	Red	KR302R
		Green	KR252G			Green	KR302G
		Yellow	KR252Y			Yellow	KR302Y
		White	KR252W			White	KR302W
380/440VAC	Red	KR253R	380/440VAC	Red	KR303R		
	Green	KR253G		Green	KR303G		
	Yellow	KR253Y		Yellow	KR303Y		
	White	KR253W		White	KR303W		

## The exterior dimension and wiring diagram

Unit : mm



# LED Pilot Lamp

KPL Series



## Part Number Description

**KPL** - 1 2

<b>1</b> Color	R : Red	G : Green	Y : Yellow	B : Blue	W : White
<b>2</b> Supply Voltage	12VAC/DC	24VAC/DC	110VAC	220VAC	110VDC

## General Specification

Current Consumption	20mA
Insulation Resistance	100MΩ 500VDC
Life Cycles	50,000 hrs
Weight	24g
Ambient Temperatur	-25°C - +55°C
Tightening Torque	0.8N·m (8.16kg·cm)

## Product Selection

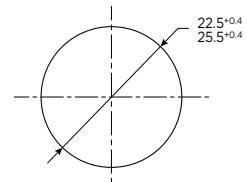
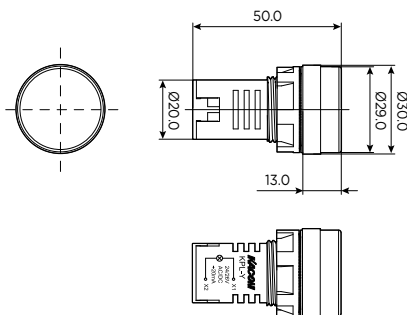
Type	Color	Part Number	Supply Voltage
 Pilot illuminated Round lamp for Ø22,25	Red	KPL-R	12VAC/DC
	Green	KPL-G	24VAC/DC
	Yellow	KPL-Y	110VAC
	Blue	KPL-B	220VAC
	White	KPL-W	110VDC

## Dimension

Unit : mm

KPL - □

Panel Cut out



# Flush Type High Brightness LED Pilot Lamp

KPL AL Series - Flush Type



## Part Number Description




**KPL** - **①** **②** AL **③**

<b>①</b> Operator Type	None : Pilot Lamp	BZI : Alternating frequency buzzer	BZC : Continuous frequency buzzer	
<b>②</b> Color	R : Red	G : Green	Y : Yellow	
	B : Blue	K : Black	W : White	
<b>③</b> Rated Voltage	12VAC/DC	24VAC/DC	110VAC/DC	220VAC

## General Specification

Current Consumption	20mA
Insulation Resistance	100MΩ 500VDC
Life Cycles	50,000 hrs
Sound Type	Continuous, Alternating frequency
Volume	80dB
Weight	24g
Ambient Temperatur	-25°C ~ +55°C (with no icing)
Tightening Torque	0.8N·m (8.16kg·cm)

## Product Selection

	Type	Color	Part Number	Supply Voltage
	Round Pilot Lamp	Red	KPL-R AL	12VAC/DC
		Green	KPL-G AL	24VAC/DC
		Yellow	KPL-Y AL	110VAC/DC
		Blue	KPL-B AL	220VAC
		White	KPL-W AL	
	Alternating frequency buzzer	Red	KPL-BZIR AL	12VAC/DC
		Green	KPL-BZIG AL	24VAC/DC
				110VAC/DC 220VAC
	Continuous frequency buzzer	Red	KPL-BZCR AL	12VAC/DC
		Green	KPL-BZCG AL	24VAC/DC
				110VAC/DC 220VAC

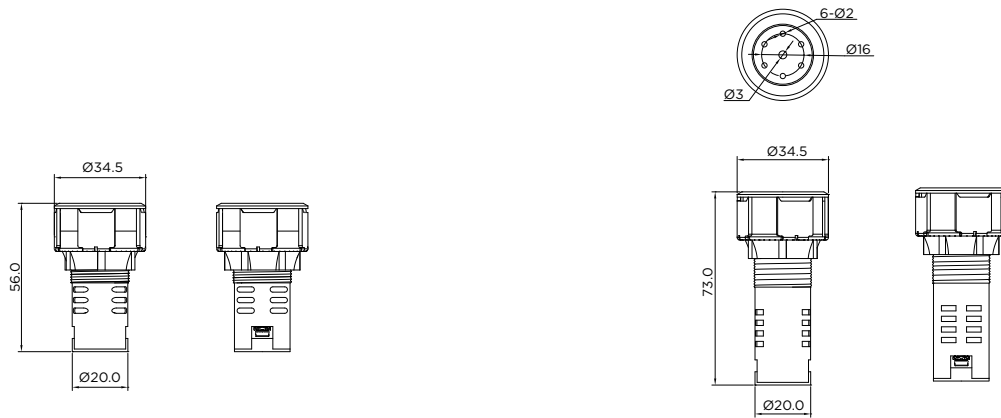
\* Buzzer is only available red and green color.

Dimension

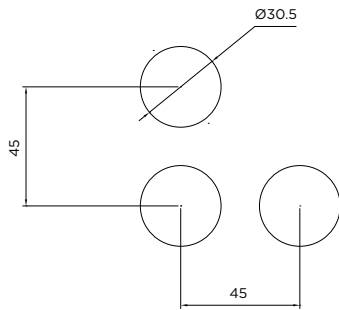
Unita : mm

Pilot Lamp

Buzzer



Panel Cut out



Human-Machine Interface

# LED Signal Lamp

KL Series



## Part Number Description

**KL** - **1** **2** **3**



<b>1</b> Size	06 : Ø6	08 : Ø8	10 : Ø10	12 : Ø12	14 : Ø14	16 : Ø16
<b>2</b> Supply Voltage	12 : 12VAC/DC	24 : 24VAC/DC	11 : 110VAC	22 : 220VAC		
<b>3</b> Color	R : Red	G : Green	Y : Yellow	B : Blue	W : White	

## General Specification

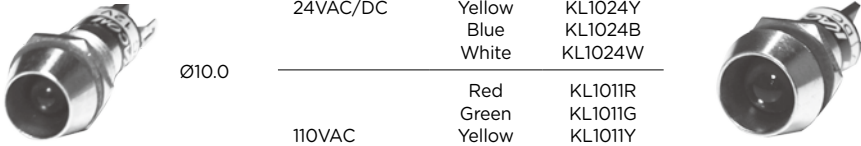
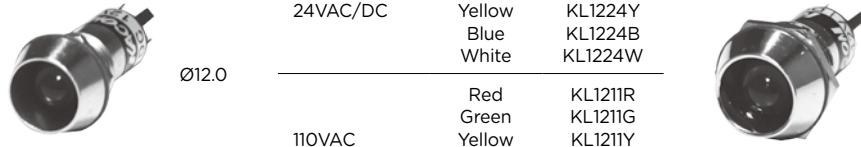
<b>Current Consumption</b>	Max. 20mA (24VDC) / AC Max. 10mA
<b>Dielectric Strength</b>	500VAC for 1 minute
<b>Insulation Resistance</b>	Min. 100MΩ 500VDC
<b>Material</b>	Brass + Cr Plate
<b>Ambient Temperature</b>	-25°C - +60°C

☞ All right reserved. Specification subject to change without notice.

## Product Selection

Size	Supply Voltage	Color	Part Number	Size	Supply Voltage	Color	Part Number
 Ø6.0	12VAC/DC	Red	KL0612R	 Ø8.0	12VAC/DC	Red	KL0812R
		Green	KL0612G			Green	KL0812G
		Yellow	KL0612Y			Yellow	KL0812Y
		Blue	KL0612B			Blue	KL0812B
		White	KL0612W			White	KL0812W
	24VAC/DC	Red	KL0624R		Red	KL0824R	
		Green	KL0624G		Green	KL0824G	
		Yellow	KL0624Y		Yellow	KL0824Y	
		Blue	KL0624B		Blue	KL0824B	
		White	KL0624W		White	KL0824W	
	110VAC	Red	KL0611R		Red	KL0811R	
		Green	KL0611G		Green	KL0811G	
		Yellow	KL0611Y		Yellow	KL0811Y	
		Blue	KL0611B		Blue	KL0811B	
		White	KL0611W		White	KL0811W	
220VAC	Red	KL0622R	Red	KL0822R			
	Green	KL0622G	Green	KL0822G			
	Yellow	KL0622Y	Yellow	KL0822Y			
	Blue	KL0622B	Blue	KL0822B			
	White	KL0622W	White	KL0822W			

Product Selection

Size	Supply Voltage	Color	Part Number	Size	Supply Voltage	Color	Part Number
	12VAC/DC	Red	KL1012R	Ø14.0	12VAC/DC	Red	KL1412R
		Green	KL1012G			Green	KL1412G
		Yellow	KL1012Y			Yellow	KL1412Y
		Blue	KL1012B			Blue	KL1412B
	24VAC/DC	White	KL1012W	110VAC	110VAC	White	KL1412W
		Red	KL1024R			Red	KL1424R
		Green	KL1024G			Green	KL1424G
		Yellow	KL1024Y			Yellow	KL1424Y
	110VAC	Blue	KL1024B	220VAC	220VAC	Blue	KL1424B
		White	KL1024W			White	KL1424W
		Red	KL1011R			Red	KL1411R
		Green	KL1011G			Green	KL1411G
220VAC	Yellow	KL1011Y	110VAC	110VAC	Yellow	KL1411Y	
	Blue	KL1011B			Blue	KL1411B	
	White	KL1011W			White	KL1411W	
	Red	KL1022R			Red	KL1422R	
12VAC/DC	Green	KL1022G	220VAC	220VAC	Green	KL1422G	
	Yellow	KL1022Y			Yellow	KL1422Y	
	Blue	KL1022B			Blue	KL1422B	
	White	KL1022W			White	KL1422W	
	12VAC/DC	Red	KL1212R	Ø16.0	12VAC/DC	Red	KL1612R
		Green	KL1212G			Green	KL1612G
		Yellow	KL1212Y			Yellow	KL1612Y
		Blue	KL1212B			Blue	KL1612B
	24VAC/DC	White	KL1212W	110VAC	110VAC	White	KL1612W
		Red	KL1224R			Red	KL1624R
		Green	KL1224G			Green	KL1624G
		Yellow	KL1224Y			Yellow	KL1624Y
	110VAC	Blue	KL1224B	220VAC	220VAC	Blue	KL1624B
		White	KL1224W			White	KL1624W
		Red	KL1211R			Red	KL1611R
		Green	KL1211G			Green	KL1611G
220VAC	Yellow	KL1211Y	110VAC	110VAC	Yellow	KL1611Y	
	Blue	KL1211B			Blue	KL1611B	
	White	KL1211W			White	KL1611W	
	Red	KL1222R			Red	KL1622R	
12VAC/DC	Green	KL1222G	220VAC	220VAC	Green	KL1622G	
	Yellow	KL1222Y			Yellow	KL1622Y	
	Blue	KL1222B			Blue	KL1622B	
	White	KL1222W			White	KL1622W	

Human-Machine Interface

Dimension

Unit : mm

