

EasyLogic™ Power metering Catalog

A complete range of meters for essential electrical system measurement



www.se.com

Panorama of the EasyLogic range	3
DM1000 series	
1-Ph Volts Amps Frequency Digital Panel Meters	5
DM3000 series	
3-Ph Volts Amps Digital Panel Meters	5
DM6xx0H series	
VAF PF Digital Panel Meters	7
EM1250H	
Energy Meter	13
PM1000H series	
Basic Power & Energy Meters	19
PM1130H / PM1230H series	
Dual Source Power & Energy Meters	25
PM2100 & PM2200 series	
Power & Energy Multi-Function Meters	31
PM2200R Quick Click series	
Multi-function Power & Energy meter with Quick Click CTs	42
Commercial reference numbers	
See your Schneider Electric representative for complete ordering information	51

Panorama of the EasyLogic™ range

Digital Panel Meters



Family	DM1000			DM3000		DM6000H	
Parameters	DM1110	DM1210	DM1310	DM3110	DM3210	DM6000H	DM62X0H
Amps: per phase & 3-ph avg	1-ph			3-ph (per ph)		■	■
Volts: per phase & 3-ph avg		1-ph			3-ph (per ph)	■	■
Frequency			■			■	■
Power Factor per phase & 3-ph avg						■	■
CT Secondary I nominal	5 A or 1 A			5 A or 1 A		5 A or 1 A	5 A or 1 A
Class of Accuracy	0.5	0.5	0.2	0.5	0.5	1	1
RS-485 Modbus RTU							■
Form Factor in mm (LengthxWidthxDepth)	96x96x44	96x96x44	96x96x44	96x96x44	96x96x44	96x96x49	96x96x49
Mounting	Flush/Panel	Flush/Panel	Flush/Panel	Flush/Panel	Flush/Panel	Flush/Panel	Flush/Panel

Simple energy cost management

Data aggregation							■
Load profile							■
Bill verification							
Cost allocation							

Basic network management

Panel instrumentation	■	■	■	■	■	■	■
Power metering							
Basic harmonic monitoring							
Status monitoring							
Threshold alarming							

Monitoring and verification

Test bench	■	■	■	■	■	■	■
Genset	■	■	■	■	■	■	■
PF Improvement panel						■	■
Labs	■	■	■	■	■	■	■
OEMs	■	■	■	■	■	■	■
Commercial reference numbers	METSEDM1110	METSEDM1210	METSEDM1310	METSEDM3110	METSEDM3210	METSEDM6000HCL10NC	METSEDM6200 HCL10RS (LED) METSEDM6220HCL1 (LCD)

Panorama of the EasyLogic™ range

Power & Energy Meters



Family	PM1120H/ EM1250H	PM1130H	PM2100 LED	PM2200 LCD	PM2200R
Parameters					
Amps: per phase & 3-ph avg	■	■	■	■	■
Volts: per phase & 3-ph avg	■	■	■	■	■
Frequency	■	■	■	■	■
Power Factor per phase & 3-ph avg	■	■	■	■	■
W, Wh	■ ●	■	■	■	■
VAR, VARh	□ ●	□	■	■	■
VA, VAh	□ ●	□	■	■	■
DI/DO (optional)			2 (PM2130)	2 (PM2230)	2 (PM2230R)
Class of Accuracy*	1.0 active (0.5 optional)	1.0 active (0.5 optional)	1.0 active (0.5S PM2x30) 1.0 reactive	1.0 active (0.5S PM2x30) 1.0 reactive	1.0 active (0.5S PM2x30R) 1.0 reactive
Analog IO A (optional)			2 (PM2130)	2 (PM2230)	2 (PM2230R)
RS-485 Modbus RTU	■	■	■	■	■
CT Secondary I nominal	5 A or 1 A	5 A or 1 A	5 A or 1 A	5 A or 1 A	LVCT
Form Factor in mm	96x96x49	96x96x52	96x96x54	96x96x54	96x96x54
With IO module			96x96x72	96x96x72	96x96x72
Mounting	Flush/Panel	Flush/Panel	Flush/Panel	Flush/Panel	Flush/Panel
Simple energy cost management					
Data aggregation	■	■	■	■	■
Load profile			■	■	■
Bill verification	■	■	■	■	■
Cost allocation	■	■	■	■	■
Basic network management					
Panel instrumentation	■	■	■	■	■
Power metering	■	■	■	■	■
Basic harmonic monitoring	■	■	■	■	■
Status monitoring			■	■	■
Threshold alarming		■	■	■	■
Monitoring and verification					
Test bench	■	■	■	■	■
Genset	■	■	■	■	■
PF Improvement panel	■	■	■	■	■
Labs	■	■	■	■	■
OEMs	■	■	■	■	■
Commercial reference numbers (Link to product information)	METSEPM1120HCL10RS METSEPM1125HCL10RS METSEPM1225HCL10RS METSEPM1125HCL1LVD METSEPM1225HCL1LVD METSEEM1250HCL1	METSEPM1130HCL05RS METSEPM1230HCL1 METSEPM1230HCL5LVD	METSEPM2110 METSEPM2120 METSEPM2130	METSEPM2210 METSEPM2220 METSEPM2230	METSEPM2210R METSEPM2220R METSEPM2230RCL05

* Refer data sheet for operating range

□ One power vector at a time (W/Wh or VA/VAh or VAR/ VARh in PM1120H and Three power vector in PM1125H/ PM1225H)

● Three power three energy

EasyLogic™

PM1000H series

The EasyLogic™ PM1000H basic power and energy meters with the option of LCD or LED Display

Offering all the measurement capabilities required to monitor the electrical installation in a single 96 x 96 mm unit, with 8 segment alphanumeric bright, large 14.2 mm high LED display (PM1125H) or with 128 * 32 pixels LCD display (PM1225H) options.



PM1125H



PM1225H



PM1120H

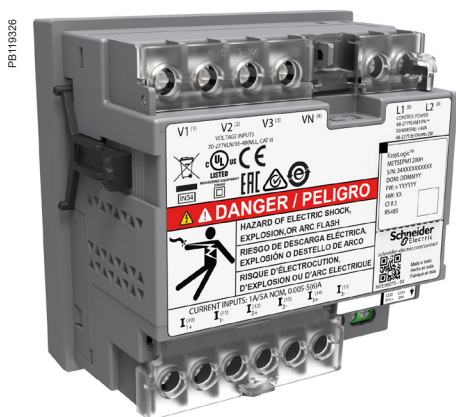
PM1000H



EasyLogic™ PM1225H power meter LCD display



EasyLogic™ PM1125H front view LED display



EasyLogic™ PM1000H power meter rear view

EasyLogic™ PM1125H/PM1225H meters are ideal replacements for multiple analog meters for stand-alone metering in custom panels, switch boards, switch-gear, genset panels, motor control centres, power factor improvement panels and OEM panel board.

• Application

- Cost management applications
 - Measurement of basic electrical parameters in control panels, motor control panels, power distribution boards, OEM's, Building management systems, panel instrumentation
 - Aggregation of energy consumption and cost allocation per area, per usage, per shift and per time within the same facility
- Network management applications
 - Power quality analysis (THD %)
 - Demand measurement
 - Measurement of Power factor
 - Phase angle between the voltage and current
 - % unbalance among voltage and current
 - Modbus RTU protocol RS-485 communication port for integration with energy management system

• Main characteristics

- Easy to install: Mounts using two retainer clips, no tools required. Compact meter with 49 mm meter depth behind the panel, connectable up to 480 V +10% AC volts L-L without voltage transformers for installation complaint with measurement category III, and double insulated.
- Easy to operate: Intuitive navigation with self-guided menus and Heart beat LED indicates normal functioning of meters while it conveys the communication status when connected to RS-485 network.
- LED display: Intuitive navigation with self-guided, four buttons, 8 segment alphanumeric LEDs of height ~14.2 mm (0.55 in), and three lines of concurrent values with Kilo & Mega value indicators.
- LCD display: Elegant single row, bright back lit graphical LCD display 132 * 32 pixels, Fast in-line view, three parameters name and value at one glance.
- Power and energy: measurement, display and recording of three power and corresponding energy parameters simultaneously - W/Wh, VA/VAh and VAR/VAh.
- Demand: measurement of Peak, present and last demand values of either W, VA or VAR parameters with selectable demand parameter, demand interval and demand technique.
- Accuracy:
 - Class 1.0 for active energy as per the test limits given in IEC 62053-21
 - Class 0.5 for active energy as per the test limits given in IEC 62053-22
 - Class 2.0 for reactive energy as per the test limits given in IEC 62053-23
 - Tested in accordance with IEC 62052-11 for energy test requirements
 - EMI/ EMC tests: As per IEC 61326-1
- CT nominal: 5 A or 1 A I-nominal (field settable). CT reversal auto correction for energy consumption.
- Password: Field configurable password for securing set up information and prevents tampering of integrated values.
- Cyber security: Option for disabling RS-485 port through front panel keys against unauthorized access. This feature can also be used for maintenance and troubleshooting of complex communication network.
- LED & LCD display: 4 digits for instantaneous parameters and 5+3 (LED) and 9+3 (LCD) digits for energy parameters with auto scrolling and auto range capability.
- Analog load bar in LED display type: The colour-coded analog load bar at the front side indicates the percentage of load through 12 LED's with the option to select full scale based on connected load.
- Suppression current: To disregard the measurement of induced and panel auxiliary load current in the circuit (settable from 5 to 99 mA).
- Protective cover: Tamper-proof terminal screws do not detach from housing.
- Control power options: Universal range 44 to 300V LN AC/DC or Low voltage DC control power option of 9 to 36V DC.
- Smart line indicators in LCD display meter: Helps check the presence of input supply voltage (healthy phase).

PM1000H technical specifications

General	
Use on LV & MV systems with Potential transformer (PT or VT)/ Current transformer (CT) ratio programmable at site	
Digital panel meters for measurement of basic electrical parameters	
Instantaneous rms values	
Current	Average line current of 3-phase, per-phase, and calculated neutral current
Voltage	Average voltage of L-L, L-N parameters, per-phase
Frequency	Any available line
Real (active), reactive, and apparent power	Total and per-phase
True power factor	Average and per-phase signed
% Unbalance	Maximum % unbalance among phases for Volts & Amps
Revolution per minute (RPM)	RPM of alternator or generator when number of poles set for 2, 4, 6, 8, 12, 14 or 16 (any one pole)
Energy values stored in non-volatile memory	
Delivered & Received or Forward & Reverse or Import & Export energy (4 quadrant) - Accumulated or Integrated active (Real - Wh), reactive (VARh), apparent (VAh).	
Independent energy (Wh) counter with non-resettable feature.	
Energy values can be set for overflow units (e.g., in kilo or mega scale)	
Quadrant based registers for Reactive energy	
Time counters such as meter ON Hrs, load RUN Hrs and power outage counters	
Old registers facilitate retrieval of last cleared energy values and load Run Hrs. Set up counters for tracking number of edits carried out since from installation	
Display	
LED display: Bright red colour, 8 segment alphanumeric LED, ~ 14.2 mm (0.55 in) height, 3 rows with 4 digits per row, auto range, auto scroll	
LCD display: Elegant single row, bright back lit graphical LCD display 132 (Horizontal) * 32 (Vertical) pixels. Fast in-line view, three parameters name and value at one glance	
Communication	
RS-485 serial channel connection Industry standard Modbus RTU protocol	
Native Plug and Play support for Schneider Electric energy management system software - EcoStruxure™ Power Monitoring Expert, EcoStruxure™ Power Operation along with ION Setup programming support	
Diagnostics	
Diagnostic page indicates the healthiness of communication system, device serial number, device model number OS & RS version, communication status. All LED segment check in LED display. In LCD display meter - alternate pixels ON/ OFF test. LCD contrast level, set back-lit time out in the range of 1 to 99 seconds	
Page lock	
Page lock and unlock features. Once the commonly referred page is enabled for lock feature, then the display returns to locked page in 4 minutes of inactive time	
Favourite page	
Number and type of parameters can be chosen and arranged in Favourite page according to the user's requirement	
Electrical characteristics	
Type of measurement	True RMS, 4 quadrant power and energy, 32 samples/cycle
Measurement accuracy	
Current, per-phase & average	± 0.5 % of reading
Voltage, L-N, L-L, per-phase & average	± 0.5 % of reading
Power (active and apparent)	± 1.0 % for Class 1.0, ± 0.5% for Class 0.5
Power (reactive)	± 2.0 % for Class 1.0 & Class 0.5
Power factor, per-phase & average	± 0.01 of reading
Frequency	± 0.05 % for F-nominal 50/ 60 Hz ± 2 ± 0.2 % for Frequency range from 30 to 48 Hz, 52 to 58 Hz and 62 to 70 Hz
Active or real energy	Class 1.0 (± 1.0 %) Class 0.5 (± 0.5%)
Apparent energy	± 1.0 % & ± 0.5 %
Reactive energy	Class 2.0 (± 2.0 %)
THD %	± 5 % of reading
Input-voltage	
VT (PT) connection	Selectable from No VT (direct), 1 VT, 2 VT to 3 VT
VT (PT) primary	100 V L-L to 999 kV L-L max
U (V) nominal (secondary)	Up to 277 V L-N/ 480 V L-L (selectable VT secondary from 100, 110, 115, 120 to 415 V L-L)
Operating voltage range with accuracy	80-480 V L-L ± 10 % Category III
Measured Voltage with full range	35 to 600 V L-L
Permanent overload (withstand)	750 V L-L, continuous
Impedance	≥5 MΩ
Frequency range	50/ 60 Hz ± 2
VA burden	≤0.2 VA at 240 V L-N at 50 Hz
Frequency – measurement	
Nominal operating range	50/60 Hz ± 2 (± 0.05 % accuracy)
Extended operating range	30 to 48 Hz, 52 to 58 Hz and 62 to 70 Hz (± 0.2 % accuracy)
Voltage input	80 to 480 V L-L ± 10 %

PM1000H

PM1000H technical specifications (continued)

Input-current	
CT connect	Solo or multi-phase current measurement by installing CT (s) in either of A1, A2, A3, A12, A23, A13, A123 phase(s)
CT primary	1 A to 32767 Amps, programmable
CT secondary	1 A or 5 Amps I-nominal (field settable)
Operating current range with accuracy	10 mA to 6 A ⁺¹
Measured Amps with full range	5 mA to 10 A
Suppression current	5 to 99 mA (to disregard negligible load)
Permanent overload (withstand)	Continuous 10 A, 10 s/hr 50 A, 1s/hr 500 A
Impedance	0.3 mΩ
Frequency range	50/60 Hz ± 2
VA burden	≤0.1 VA at 5 A, 50 Hz
AC - control power	
Operating range	48 to 277 V DC ± 10 % or LVDC option of 9 to 36 V DC
Burden	≤4 VA at 240 V L-N, 50 Hz
Frequency	50/60 Hz nominal (45 to 65 Hz operating range)
Ride-through time	200 ms at 240 V L-N, 50Hz
DC - control power	
Operating range	48 to 277 V DC ± 10 %
Burden	≤2 W at 240 V DC
Ride-through time	120 ms at 240 V DC
Display update	
Instantaneous/ RMS parameters	1 s
Demand parameters	5 s
THD % (voltage and current)	5 s
Power system	
Phase labelling	Configurable to 123, ABC, rst, pqr or ryb
Wiring configuration	13 wiring schemes (5 on front screen) 1ph, 2 w, L-N 1ph, 2 w, L-L 1ph, 3 w, L-L with N (2phase) 3ph, 3 w, Delta, Ungrounded 3ph, 3 w, Delta, Corner Grounded ⁺² 3ph, 3 w, Wye, Ungrounded ⁺² 3ph, 3 w, Wye Grounded ⁺² 3ph, 3 w, Wye, Resistance Grounded ⁺² 3ph, 4 w, Open Delta, Center-Tapped ⁺² 3ph, 4 w, Delta, Center-Tapped ⁺² 3ph, 4 w, Wye, Ungrounded ⁺² 3ph, 4 w, Wye Grounded 3ph, 4 w, Wye, Resistance Grounded ⁺²
Mechanical characteristics	
Weight	~ 300 gm (10.6 oz)
IP degree of protection	IP 51 front side, IP 30-meter body, tested as per IEC 60529 (IP 54 with optional gasket METSEIP54GK96X96FF or upgrade to IP65 front side with Optional accessory kit METSEIP65OP96X96FF)
Material	Polycarbonate meets UL 94V-0 flammability rating
Dimensions W x H x D	96 x 96 x 49 mm (3.78 x 3.78 x 1.93 in) (D = depth of the meter from housing mounting flange) 13 mm (0.51 in) protrusion of meter from housing flange
Mounting position	Vertical
Panel thickness	5 mm (0.196 in) maximum
Environmental characteristics	
Operating temperature	- 10 to +60° C (14 to 140° F)
Storage temperature	- 20 to +70° C (-4 to 158° F)
Humidity rating	5 % to 95 % RH non-condensing
Pollution degree	2
Attitude	≤2000 metres (6562 ft), Category III
Product life	>7 years
Insulation category	Double insulation for user accessible parts

⁺¹ Additional error of ± 2 % between 10 mA to 50 mA, ± 1% between 50 mA to 100 mA)⁺² Set up through communication

PM1000H

PM1000H technical specifications (continued)

Electromagnetic compatibility (tested as per IEC 61326-1)	
Electrostatic discharge	IEC 61000-4-2
Immunity to radiated field	IEC 61000-4-3
Immunity to fast transients	IEC 61000-4-4
Immunity to impulse waves	IEC 61000-4-5
Conducted immunity	IEC 61000-4-6
Immunity to magnetic fields	IEC 61000-4-8
Immunity to voltage dips	IEC 61000-4-11
Emissions	Emissions FCC Part 15 Class A/CE
Safety	
Europe	CE, as per IEC 61010-1 edition-3
US and Canada	cULus as per UL61010-1 and CAN/CSA-C22.2 IEC 61010-1 edition-3, for 480 V AC L-L
Measurement Category (Voltage inputs)	CAT III up to 480 V L-L
Overvoltage Category (Control power)	CAT III up to 300 V L-N
Dielectric	As per IEC/UL 61010-1 edition-3
Protective Class	II, Double insulated for user accessible parts
Green premium	EOL, REACH, PEP, RoHS complied
Communication	
RS-485 port	Modbus RTU: 2-Wires, 4800, 9600, 19200 or 38400 baud, Parity - Even, Odd, None, 1 stop bit if parity is Odd or Even, 2 stop bits if none. DLF3000: Firmware update through communication port
Isolation	2.5 kV RMS, double insulated
Protection features	User configurable password (selectable from 0000 to 9999) protected for set-up and clearing of energy, and other integrated data
Display language	English
Technical publication	Printed installation guide (QSG) supplied with meter in multi-language (EN, ES, FR, DE, PT, RU, TR, ZH) and user guide in soft format
Human machine interface	
Display type	LED display: 8 segment Alpha-numeric LED, ~ 14.2 mm (0.55 in) height, 3 rows with 4 digits per row, 1 column of 12 LEDs to indicate percentage of load connected in system. 4 digits for instantaneous parameters and 5+3 digits for energy parameters with auto scrolling and auto range LCD display: Fast in-line view, three parameters name and value at one glance. 3+1 digits for instantaneous parameters and 9+3 digits for energy parameters with auto scrolling and auto range
Keypad	4 buttons for navigation at the front, combination of 2 buttons for performing set-up, lock/unlock pages and viewing diagnostic pages
CAL LED (pulse LED)	Red colour, meter constant is configurable from 1 to 9999000 pulses/ k_h (kWh, kVAh, or kVARh)
Communication activity	Green LED (for indicating RS-485 interface or heart beat pulse)

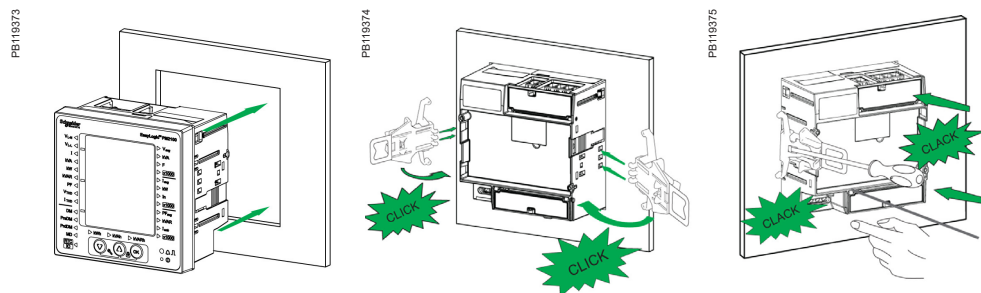
Feature set summary

Parameter/ Meter reference	PM1125H	PM1225H	PM1120H*
Class of accuracy	1.0 / 0.5	1.0 / 0.5	1.0 / 0.5
Sampling rate per cycle	32	32	32
Amps: average and per-phase, calculated neutral current	■	■	■
Voltage: V L-N, V L-L, average, per-phase	■	■	■
Power factor: average and per-phase	■	■	■
Frequency: any available phase	■	■	■
Power (W, VA, VAR) - Total and per-phase	■	■	■
Energy (Wh, VARh, VAh) - Delivered & Received	■	■	■ 1 energy (Del only)
Demand parameters – selectable for W, VA, VAR (one at a time)	■	■	■
Old registers – retrieval of last cleared values of energy and Run Hrs	■	■	■
Revolutions per minute (RPM)	■	■	■
Phase angle : Amp Deg (V to Amps, per-phase)	■	■	■
% Unbalance: Max unbalance Volts & Amps among 3 phase (s)	■	■	■
Life time counter - meter ON Hrs, Load Run Hrs, number of power interruptions	■	■	■
Communication: 2 wire, RS-485, Modbus RTU protocol	■	■	■
Display	LED	LCD	LED
Commercial reference numbers			
Commercial reference for 44 - 300 V AC/DC control power	METSEPM1125HCL10RS (Cl 1.0) METSEPM1125HCL05RD (Cl 0.5)	METSEPM1225HCL1 (Cl 1.0) METSEPM1225HCL5 (Cl 0.5)	METSEPM1120HCL10RS (Cl 1.0) METSEPM1120HCL05RS (Cl 0.5)
Commercial reference for Low Voltage DC (9-36 V) option	METSEPM1125HCL1LVD (Cl 1.0) METSEPM1125HCL5LVD (Cl 0.5)	METSEPM1225HCL1LVD (Cl 1.0) METSEPM1225HCL5LVD (Cl 0.5)	

* In PM1120H, measurement and display of any one power parameter at a time - configurable through set-up/ communication Energy measurement depends on type of power parameter selected during set up (W/Wh or VA/VAh or VAR/VARh). For reactive energy (VARh), total or net VARh on display, + VARh and - VARh through communication.

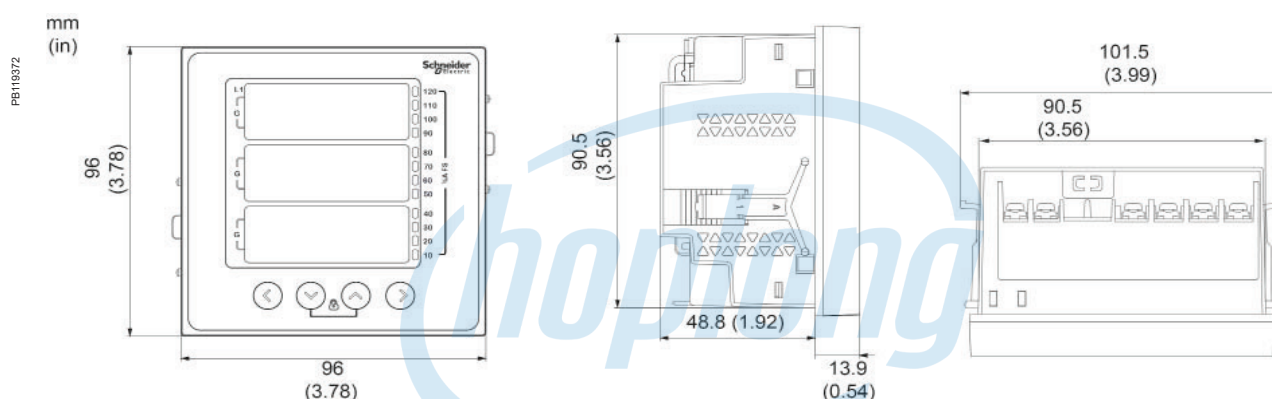
PM1000H

PM1000H meter mounting

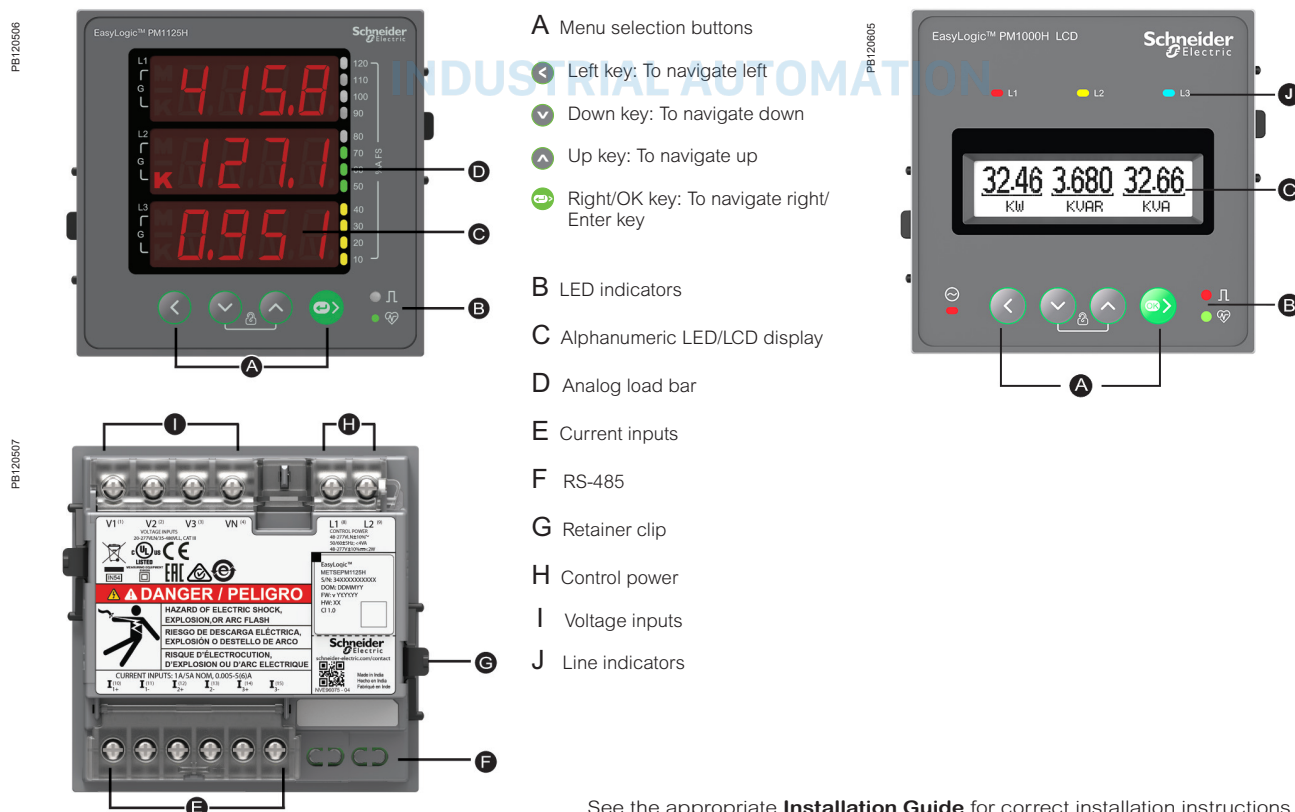


See the appropriate **Installation Guide** for correct installation instructions.

PM1000H meter mechanical dimensions



PM1000H LED/LCD meter displays overview



See the appropriate **Installation Guide** for correct installation instructions.

EasyLogic Commercial Reference Numbers

Comm. reference number	Description
DM1000 series	
METSEDM1110	DM1110 1-ph Amps digital panel meter
METSEDM1210	DM1210 1-ph Volts digital panel meter
METSEDM1310	DM1310 1-ph Frequency digital panel meter
DM3000 series	
METSEDM3110	DM3110 3-ph Amps digital panel meter
METSEDM3210	DM3210 3-ph Volts digital panel meter
DM6000H series	
METSEDM6000HCL10NC	DM6000H VAF PF CI 1.0 digital panel meter
DM6200 series	
METSEDM6200HCL10RS	DM6200H VAF PF CI 1.0 RS-485 digital panel meter
METSEDM6220HCL1	DM6220H VAF PF CI 1.0 RS-485 digital panel meter
METSEDM6220HCL1LVD	DM6220H VAF PF CI 1.0 RS-485 digital panel meter
EM1250H	
METSEEM1250HCL1	EM1250H CI 1.0 RS-485 power & energy meter
PM1120H series	
METSEPM1120HCL10RS	PM1120H LED CI 1.0 RS-485 One power and energy meter
METSEPM1120HCL05RS	PM1120H LED CI 0.5 RS-485 One power and energy meter
METSEPM1125HCL10RS	PM1125H LED CI 1.0 RS-485 Three power and energy meter
METSEPM1125HCL1LVD	PM1125H LED CI 1.0 Control power 9 to 36V DC RS-485 Three power and energy meter
METSEPM1225HCL1	PM1225H LCD CI 1.0 RS-485 Three power and energy meter
METSEPM1225HCL5	PM1225H LCD CI 0,5 RS-485 Three power and energy meter
METSEPM1225HCL1LVD	PM1225H LCD CI 1.0 Control power 9 to 36V DC RS-485 Three power and energy meter
METSEPM1225HCL5LVD	PM1225H LCD CI 0.5 Control power 9 to 36V DC RS-485 Three power and energy meter
PM1130H series	
METSEPM1130HCL05RS	PM1130H LED CI 0.5 RS-485 dual source power and energy meter
METSEPM1230HCL1	PM1230H LCD CI 1.0 RS-485 dual source power and energy meter
METSEPM1230HCL5LVD	PM1230H LCD CI 0.5 Control power 9 to 36V DC RS-485 dual source power & energy meter
PM2000 series	
METSEPM2110	PM2110 LED VAF P&E THD Pulse CI 1.0 power and energy meter
METSEPM2120	PM2120 LED VAF P&E THD RTC RS-485 CI 1.0 power and energy meter
METSEPM2125C2AI2AO	PM2125C LED VAF P&E THD 15th Harmonics RTC 2 Analog Inputs 2 Analog outputs RS-485 CI 0.5S power and energy meter
METSEPM2125C2DI2RO	PM2125C LED VAF P&E THD 15th Harmonics RTC 2 Digital Inputs 2 Relay outputs RS-485 CI 0.5S power and energy meter
METSEPM2130	PM2130 LED VAF P&E THD 31st Mar RS-485 CI 0.5 power and energy meter
METSEPM2210	PM2210 LCD VAF P&E THD Pulse CI 1.0 power and energy meter
METSEPM2220	PM2220 LCD VAF P&E THD RTC RS-485 CI 1.0 power and energy meter
METSEPM2225C2AI2AO	PM2225C LCD VAF P&E THD 15th Harmonics RTC 2 Digital Inputs 2 Relay outputs RS-485 CI 0.5S power and energy meter
METSEPM2225C2DI2RO	PM2225C LCD VAF P&E THD 15th Harmonics RTC 2 Digital Inputs 2 Relay outputs RS-485 CI 0.5S power and energy meter
METSEPM2230	PM2230 LCD VAF P&E THD 31st Har RS-485 CI 0.5 power and energy meter
METSEPM2210R	PM2210R LCD Pulse RSJ45 LVCT CI 1.0 power and energy meter
METSEPM2220R	PM2220R LCD RS-485 RSJ45 LVCT CI 1.0 power and energy meter
METSEPM2KDGTLIO22	PM2x30 Digital IO Module with 2 channels each
METSEPM2KANLGIO22	PM2x30 Analog IO module with 2 channels each
METSEPM2KANLGIO11	PM2x30 Analog IO module with 1 channel each
METSEPM2K2DI2RO	PM2x30 Digital Input and Relay Output Module with 2 channels each

See your Schneider Electric representative for complete ordering information.

EasyLogic Commercial Reference Numbers cotel.

Comm. reference number	Description
PM2200R series	LVCT Solid 3 in 1 RJ45
METSECTV25006	LVCT Solid Core 3 in 1 RJ45 25mmCtr 60 A:1/3V
METSECTV25010	LVCT Solid Core 3 in 1 RJ45 25mmCtr 100 A:1/3V
METSECTV25013	LVCT Solid Core 3 in 1 RJ45 25mmCtr 125 A:1/3V
METSECTV25016	LVCT Solid Core 3 in 1 RJ45 25mmCtr 160 A:1/3V
METSECTV35006	LVCT Solid Core 3 in 1 RJ45 35mmCtr 60 A:1/3V
METSECTV35010	LVCT Solid Core 3 in 1 RJ45 35mmCtr 100 A:1/3V
METSECTV35012	LVCT Solid Core 3 in 1 RJ45 35mmCtr 120 A:1/3V
METSECTV35013	LVCT Solid Core 3in1 RJ45 35mmCtr 125 A:1/3V
METSECTV35015	LVCT Solid Core 3in1 RJ45 35mmCtr 150 A:1/3V
METSECTV35016	LVCT Solid Core 3in1 RJ45 35mmCtr 160 A:1/3V
METSECTV35020	LVCT Solid Core 3in1 RJ45 35mmCtr 200 A:1/3V
METSECTV35025	LVCT Solid Core 3in1 RJ45 35mmCtr 250 A:1/3V
METSECTV45025	LVCT Solid Core 3in1 RJ45 45mmCtr 250 A:1/3V
METSECTV45040	LVCT Solid Core 3in1 RJ45 45mmCtr 400 A:1/3V
METSECTV45050	LVCT Solid Core 3in1 RJ45 45mmCtr 500 A:1/3V
METSECTV45060	LVCT Solid Core 3in1 RJ45 45mmCtr 600 A:1/3V
METSECTV45063	LVCT Solid Core 3in1 RJ45 45mmCtr 630 A:1/3V
METSECTV29006	LVCT Solid Core 3in1 RJ45 29mmCtr 60 A:1/3V
METSECTV29010	LVCT Solid Core 3in1 RJ45 29mmCtr 100 A:1/3V
METSECTV29012	LVCT Solid Core 3in1 RJ45 29mmCtr 120 A:1/3V
METSECTV29013	LVCT Solid Core 3in1 RJ45 29mmCtr 125 A:1/3V
METSECTV29015	LVCT Solid Core 3in1 RJ45 29mmCtr 150 A:1/3V
METSECTV29016	LVCT Solid Core 3in1 RJ45 29mmCtr 160 A:1/3V
METSECTV29020	LVCT Solid Core 3in1 RJ45 29mmCtr 200 A:1/3V
METSECTV70080	LVCT Solid Core 3in1 RJ45 70mmCtr 800 A:1/3V
METSECTV70100	LVCT Solid Core 3in1 RJ45 70mmCtr 1000 A:1/3V
METSECTV70125	LVCT Solid Core 3in1 RJ45 70mmCtr 1250 A:1/3V
Cables	
DCEPCURJX5GYM	Category 5e, Patch Cord, UTP, 0.5 M, Grey
DCEPCURJ01GYM	Category 5e, Patch Cord, UTP, 1 M, Grey
DCEPCURJ02GYM	Category 5e, Patch Cord, UTP, 2 M, Grey
DCEPCURJ03GYM	Category 5e, Patch Cord, UTP, 3 M, Grey
DCEPCURJ05GYM	Category 5e, Patch Cord, UTP, 5 M, Grey
DCEPCURJ10GYM	Category 5e, Patch Cord, UTP, 10 M, Grey

See your Schneider Electric representative for complete ordering information.



INDUSTRIAL AUTOMATION

www.se.com

Schneider Electric Industries SAS
35, Rue Joseph Monier
CS 30323
92506 Rueil Malmaison Cedex

RCS Nanterre 954 503 439
Capital social 928 298 512 €
www.se.com

June 2021
EasyLogic™ Power Metering Catalog
PLSED310053EN

© 2021 - Schneider Electric. All rights reserved.
All trademarks are owned by Schneider Electric
Industries SAS or its affiliated companies.

As standards, specifications and designs develop from time to time, please
ask for confirmation of the information given in this document.

Over 75 % of Schneider Electric products
have been awarded the Green Premium ecolabel.

